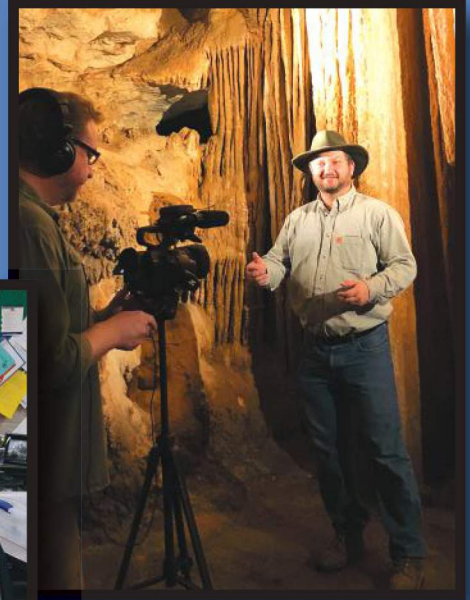




*Promoting Excellence in
Earth Science Education*



OKLAHOMA GEOLOGICAL FOUNDATION

2017 ANNUAL REPORT

Table of Contents

A Letter From the Chairman	3
The Foundation's Heritage	5
The Foundation's Vision For the Future	6
The Everyday Earth & STEM Outreach Programs	8
New Programs 2014-2017	10
Annual Events	12
2017 Investment Summary	14
Supporting Earth Science Education	16
Donors	18
Grants and Awardees	22
Corporate Contributions Thru 12/2017	30
Individual Contributions Thru 12/2017	32
Directors	35





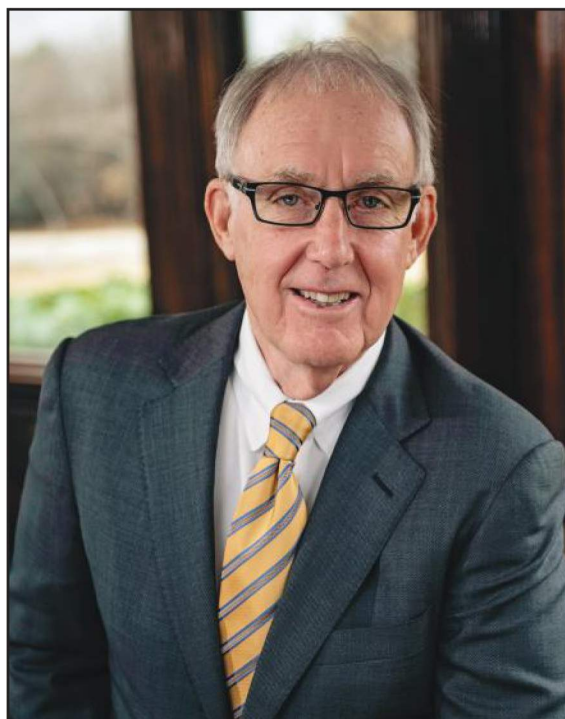
A Letter From the Chairman

From inception, the Oklahoma Geological Foundation has implemented a model of “Excellence in Earth Science Education”. The Board of Directors of the Foundation fully endorse and embrace this “Vision of the Future” which challenges students and teachers to make Earth Science and STEM (Science, Technology, Engineering, & Mathematics) education a priority. As Chairman, I am proud to present to you the 2017 Annual Report, and to update the progress the Foundation has made with the execution of this model.

Throughout the Annual Report you will see the dedication, commitment, and leadership from the Directors for this “Excellence in Earth Science Education” theme repeated time after time. With a long-term perspective always in mind, together we can create a stronger and better education for Oklahoma students of all ages.

This Annual Report provides the Directors an opportunity to briefly discuss the activities and accomplishments of the past several years, and most importantly, to express our thanks and to recognize all the donors and sponsors whose gifts have been instrumental in the growth of the Foundation.

Since the last Annual Report, the Foundation’s Board of Directors has been expanded to twelve members with the addition of four new Directors: Michael Bone, Lanny Holman, Devin Dennie, and Larry Lunardi. During this time, three new Directed Programs were established: the William A. Clement Earth Science for Guthrie Middle and High Schools (2014); the Robert W. & Jo Ann Waring Memorial Scholarship Program (2015); and the Oklahoma Geological Foundation STEM Program (2017). These new programs are described in detail within this report.



The Foundation will continue to establish additional Directed Programs, as well as support and development of the traditional programs which provide funding for grants and scholarships to the benefit of many students, teachers, and schools throughout the State of Oklahoma. Over the last several years, our Foundation programs have impacted thousands of students and teachers with new and innovative grants and scholarships. Some of these programs are highlighted in the Annual Report to illustrate just how significantly your generous gifts have impacted so many students, teachers, and schools.

The Directors are pleased to announce excellent financial growth while steadily increasing the distribution of funds for grants and scholarships. Since December 31, 2013, the net asset base of the Foundation has grown by over \$500,000 while distributing in excess of \$392,000 towards the funding of grants and scholarships to students, teachers, and schools in Oklahoma. The total net asset value of the Oklahoma Geological Foundation for the period ending December 31, 2017 was \$2,542,566. A more detailed financial discussion is included in the Financial Section of the Annual Report.

The successes being reported are only made possible because of the generosity of our many past and current donors. In November 2017, the Foundation was awarded the “Devon Energy Thunder Explorers Award”, which recognizes organizations that encourage outreach and education on STEM topics. This award is a direct reflection of the generosity and strong commitment from you, the Foundation donors.

Whether your gifts help energize the next generation of leaders, promote Earth Science and STEM, support the work of our educators, or simply help to fulfill the dreams of our students and teachers, your dedication to the mission and vision of the Oklahoma Geological Foundation truly does make a difference. In a recent letter received by the Foundation, one of the Grant recipients stated,

“This Grant will help me in more ways than you can imagine! The Oklahoma Geological Foundation is a group of amazing people that are willing to help support young geoscientists like me and I hope to one day do the same for someone in my current position. Thank you for your generosity!”

This Annual Report is offered in deepest gratitude and recognition of your support.

Warm and personal regards,

Thomas C. Cronin, Chairman



The Foundation's Heritage

FOUNDING DIRECTORS:

David G. Campbell | Thomas E. Davis | Louis M. Ford* | Dennis F. Smith*

INDIVIDUAL CHARTER MEMBERS:

Glenn L. Blumstein | Steven J. Boone | J. Phillip Boyle, Jr.* | Barth W. Bracken | Jordan C. Braun
Les J. Broker | David G. Bryant | David G. Campbell | James W. Caylor* | Thomas C. Cronin
Thomas E. Davis | Robert Hancock* | Ralph H. Espach, Jr. | Louis M. Ford | John H. Gatchell*
G. Carl Hale* | Dick S. Horton* | Bill J. Jezek* | Harold J. Kleen* | Jere W. McKenny
Cameron R. McLain | Wilbur E. McMurtry* | Peter Norton | J. Durwood Pate* | Lee R. Riley, Jr.*
Lance Ruffel | William M. Smith | Suzanne Takken Estate* | Victor J. Veroda | Roger Wilkinson*
Louis R. Wilson* | Dennis F.* & Bonnie Smith* | Herbert G. & Shirley A. Davis
Frederick H.* & Lois M. Kate* | Robert W.* & Jo Ann Waring*

CORPORATE CHARTER MEMBERS:

Crawley Petroleum | Kerr-McGee Corporation | PSEC, Inc.
Sam K. Viersen Family Foundation | Mid-Continent Section of AAPG

PAST FOUNDATION CHAIRS:

Steven Boone | David G. Campbell | Thomas E. Davis | Louis M. Ford*

PAST FOUNDATION DIRECTORS:

James W. Caylor* | Ralph H. Espach, Jr. | Jere W. McKenny | Cameron R. McClain
Michael R. Root | Dennis F. Smith* | William M. Smith | Jack Stark

* (Deceased)

Originally incorporated in 1993, the Oklahoma City Geological Foundation faced numerous challenges during the early years of existence, as the oil and gas industry dealt with low commodity prices and economic uncertainties. The individuals and entities listed above represent those who dealt with the seemingly insurmountable obstacles by unselfishly contributing their time and capital to the Foundation.

In 2011, the Oklahoma City Geological Foundation formally became the Oklahoma Geological Foundation to further enhance the Foundation's presence and commitment to serve all students, teachers, and schools throughout the State of Oklahoma. The Oklahoma Geological Foundation exists today in no small part by the persistent efforts of the Founding Members to make the Foundation a strong and vibrant organization.



The Foundation's Vision for The Future

In 1993, a group of Oklahoma geologists had the foresight and desire to promote Earth Science programs within the Oklahoma school systems. The Oklahoma Geological Foundation has been an instrumental source of funding that directly benefits many Earth Science programs and has annually funded grants and scholarships throughout Oklahoma, to students in elementary, middle, and high schools, and to students enrolled in undergraduate and graduate programs in colleges and universities. The Foundation actively promotes numerous programs that support teachers and educational institutions.

The Oklahoma Geological Foundation continues to grow and by end of 2017, the Foundation has established twenty programs, each of which are available to encourage the participation in the Earth Sciences. As listed below with the dates of inception, they include:

- 1). The Frederick H. & Lois M. Kate Award (2006)
- 2). The Suzanne Takken Memorial Award (2006)
- 3). The Beth Cronin Elementary School Program (2006)
- 4). Kenneth Stewart Cronin Lecture Series Program (2006)
- 5). OGF Excellence in Earth Science Education Awards Program (2006)
- 6). The Frederick H. & Lois M. Kate EESE Award (2006)
- 7). Herbert G. & Shirley A. Davis OSU Geology Scholarship Program (2007)
- 8). The John Gatchell Earth Science Teaching Program (2008)
- 9). The Philip Boyle Foundation & The OGF's School Program (2008)
- 10). The Charles E. Branham Geological Library Program (2010)
- 11). The OGF Summer Field Camp Grants Program (2011)
- 12). Oklahoma Geological Foundation High School Grant (2011)
- 13). Oklahoma Geological Foundation Middle School Grant (2011)
- 14). Oklahoma Geological Foundation Elementary School Grant (2011)
- 15). Lance Ruffel & OGF Innovations in Earth Science Education Program (2012)
- 16). Shirley A. Davis Program for Earth Science Education (2013)
- 17). F.M. Black Summer Field Camp Grant (2013)
- 18). William A. Clement Earth Science for Guthrie Middle & High Schools (2014)
- 19). Robert W. & Jo Ann Waring Memorial Scholarship Program (2015)
- 20). The Oklahoma Geological Foundation STEM Program (2017)

Since inception, the Oklahoma Geological Foundation has implemented a model of “Excellence in Earth Science Education.” With the help and support from the Foundation, this model challenges students and teachers to make Earth Science education a priority. The Foundation’s “Vision for the Future” is divided into the following Directives:

1. Encourage and financially support students who attend elementary, middle, and high schools within Oklahoma and who are enrolled in a Geological Science curriculum.
2. Encourage and financially support teachers and schools within Oklahoma that maintain a curriculum in the Geological Sciences.
3. Encourage and financially support students who: a) attend colleges and universities within Oklahoma and major in the Geological Sciences, with the goal of obtaining undergraduate or graduate degrees in those fields; and, b) students who plan to pursue a career in the field of Geological Sciences.
4. Encourage and financially support worthy, scientific endeavors that are conducted by other organizations that promote the Geological Sciences within the State of Oklahoma.
5. Acknowledge and honor those Professionals that are working in businesses affiliated with the Geological Sciences, and who have made or continue to make significant contributions to their profession and communities.

The future well-being of Earth Science education, the Geological Sciences, and the Oil and Gas Industry, will ultimately depend upon the next generation of Geoscientists, because these future professionals are today’s students. Funds from the Oklahoma Geological Foundation’s Programs are being used to educate, train, and prepare students for the future. The Foundation Directors are fully committed to providing the Geoscience educational needs for teachers and institutions within Oklahoma.

“Those of us who have been more fortunate have a debt to society which I believe can best be paid by training and educating the youth of the Nation”

-Frank Phillips (1873-1950)



The EveryDay Earth & STEM Outreach Programs

Since December 1993, the Oklahoma Geological Foundation has been a major supporter of Earth Science education and the STEM (Science, Technology, Engineering, & Mathematics) Outreach Program in Oklahoma. The Foundation is focused on K through 12th grades and university level scholarships and grants in support of Oklahoma's science teachers and students.

Some of the Foundation's existing STEM Outreach Programs include:

- An Earth Science related teacher education program called "More! Rocks in Your Head".
- The creation and distribution of museum-quality rock, mineral, and fossil kits to Oklahoma schools and teachers, which the Foundation refers to as the "Rock, Mineral, & Fossil Collections".
- Public education events such as the Foundation Annual Awards Dinner, honoring teachers, students, and schools.
- Educational Banquets recognizing Oklahoma's Legends in Earth Science and the Petroleum Industry.

The Foundation is currently in the process of developing a new educational program entitled "EveryDay Earth" which is a new teaching system to assist teachers and students in Earth Science education and technology concepts, by interactively exploring Oklahoma's landscapes.

The "EveryDay Earth" Program is a set of digital classroom supplements for the teaching of Earth Science aimed primarily for the 4th through 8th grade levels. The initial version of the program will be focused on specific localities based in the greater Oklahoma and Southern Plains region. Subsequent versions will be consecrated on other geological and geographical localities. The program consists of an integrated set of short, entertaining, and educational videos containing interactive functionality to actively engage the student. These videos and online materials will help teachers tie abstract learning to concrete concepts and ideas that support national and state Earth Science education standards. The program will include suggested curricula and learning plans, a website learning management system, numerous videos linked to physical rock, mineral, and fossil kits, experiments which can be done at home, and opportunities for field experiences at local parks.

Why "EveryDay Earth"? In the past, children played in the dirt, skipped rocks, or otherwise interacted directly with the Earth around them. These interactions served as excellent foundational learning experiences. Today's youth are more likely to play with a computer or iPad, with various Apps or games such as "Minecraft" in order to simulate outdoor experiences! This compromise reduces a child's ability to learn about their environment. "EveryDay Earth" is being developed as an attempt to bring the best of both situations together by combining the digital interactivity of games and fun-fact delivery of videos, with physical kits and real-world experiences.



EveryDay Earth & STEM Outreach Programs (Cont.)

Other problems have been observed in Earth Science education in the Oklahoma school systems:

- Teachers in Oklahoma rarely hold a degree in the Earth Sciences, so basic Earth Science and technology concepts are inconsistently taught in many of the schools.
- Earth Science courses are provided on a sporadic and inconsistent basis, often focused on minimum requirements to meet the established standards.
- Public school teachers lack the appropriate training, funding, and equipment to teach Earth Science and can be intimidated by the subject. This results in failing to inspire and develop a passion for the teaching of Earth Science.

To affect a positive change for these situations and to create well-informed citizens, the Oklahoma Geological Foundation is creating the “EveryDay Earth Program”, to distribute to Oklahoma schools for use by teachers and students.

The program will consist of ten stand-alone Modules, with each Module upon completion, being its own impactful, deliverable product and free of charge to sponsored schools. Development of Module 1 began in May 2017. The Foundation has committed the necessary funds for the initial startup of the “EveryDay Earth Program” as well as funding for the development of Module 1.

The first Module, based on Turner Falls Park in Davis, Oklahoma, will contain sub-sections, each related to at least six learning standards: Earth Materials (Formation of Rocks); Earth Processes (Karsting, Erosion, Waterfall Formations); Water Resources (Human Impacts and Hydrogeology); Tectonics (Arbuckle Mountains, Earth History); Formations, Fossils, and Strata (Basic Principles of Geology); and GeoEngineering.

In addition, a Learning Management System will be created to store the videos and content online for teachers and students to easily access the materials, with the ability to place orders for the physical kits. These kits will be based on the existing “Rock, Mineral, and Fossil Collections” program already established by the Oklahoma Geological Foundation.

Estimated completion date for Module 1 is December 2018, with distribution to the teachers and students by Spring 2019. The total cost of the “EveryDay Earth Program” is estimated to be \$1,300,000. The Foundation is extremely excited about this program. More information will become available in 2018, and on the Foundation’s website.





New Programs

(2014-2017)

The William A. Clement Earth Science Grant for Guthrie Middle & High Schools

The William A. Clement Earth Science Grant was established in 2014 by Marilyn Clement, Stone Canyon and the Oklahoma Geological Foundation in memory of William A. Clement.

William A. Clement was a brilliant and well respected Geologist in Oklahoma City. Bill practiced his profession as a geoscientist with passion and persistence, and infused his work with an optimism that was both boundless and uplifting to those around him. Bill was extremely successful at finding oil and gas, and for forty years he constantly honed his skills in both geology and geophysics in an unending quest for the next discovery. Bill was manager of Clement Resources, LLC, President of Stone Canyon Exploration Inc., and a consulting geoscientist for Range Resources Corporation. He was a person of great character, integrity, and devotion to his profession.

The purpose of this program is to foster interest in the Earth Science studies in the middle and high schools in Guthrie, Oklahoma through innovative teaching techniques. This Grant will provide the Guthrie schools with the technology to allow students to discover in depth the basic ideas of Earth Science, including Geology, Meteorology, Hydrogeology, Oceanography, Seismology, and Volcanology studies. The program will provide and make available to teachers and students in Guthrie, new and innovative programs and technologies, which include enrichment workshops to prepare and educate teachers on how to introduce their students to Earth Science education.



Robert W. and Jo Ann Waring Memorial Scholarship Program

The Robert W. and Jo Ann Waring Program was established in 2015 by Equitable Royalty Corp., the Waring Family, and the Oklahoma Geological Foundation to honor Robert W. and Jo Ann Waring.

For decades, Bob and Jo Ann Waring were active members of the geo-community in Oklahoma City. In 1964, Bob became an independent geologist early in his career, and like most successful independent geologists in the 1960's through the 1990's, Bob knew everyone. As a result, Bob and Jo Ann were involved in geological committees and organizations. Bob held numerous positions with the Oklahoma City Geological Society, as well as serving as committee chair for various Society functions. Jo Ann was very active in the Geo-Wives organization for many years. Both Jo Ann and Bob were active in the Oklahoma Geological Foundation and were Charter Members of the Foundation. They were strong advocates of education, and through the Foundation, provided funds to those unable to afford or access quality education. Bob was honored as one of the Foundation's Legends in 2015.

The purpose of the program is to provide the funding necessary to assist and help undergraduate or graduate students pursue a degree in geology at the University of Oklahoma or Oklahoma State University. Additionally, the program intends to provide grants for elementary and high school Earth Science teachers and continuous support to assist them with the establishment of new and innovative Earth Science programs and technologies in their classrooms, as well as enhancement of their existing programs.

The Oklahoma Geological Foundation STEM Program

The Oklahoma Geological Foundation established the STEM Program in 2017. Since 1994, the Oklahoma Geological Foundation has been a major supporter of Earth Science education and STEM education in Oklahoma. The Foundation is focused on both K-12 and University level scholarships and grants in support of Oklahoma's science teachers and students. The Foundation established the STEM Program, with the purpose being:

- To provide funds that will be used to stimulate and reward excellence in pre-college and college Earth Science studies, with emphasis on lower, middle school and high school students and science teachers (grades K through 12).
- To disseminate and make available to teachers and students throughout Oklahoma new and innovative programs and technologies and to recognize students, teachers and schools as they implement new and innovative programs and technologies.
- To further expand the Foundation's Earth Science-related teacher educational programs, the creation and distribution of the "Rock, Mineral, and Fossil Collections", existing public education events such as teacher and student awards, and educational events.



Annual Events

The Oklahoma Geological Foundation Legends Award

The Directors of the Oklahoma Geological Foundation recognize that many outstanding men and women have historically distinguished themselves by having made substantial contributions to the science of Geology, created significant advancements in the oil and gas industry, and have improved their communities for the betterment of society.

To proudly honor these incredible individuals, the Foundation created and established the "Pioneer Legend", "Historical Legend", and "Living Legend" awards. Since inception in the fall of 2007, the Oklahoma Geological Foundation has now bestowed these honors to thirty-four individuals at its annual "Legends Award" reception.

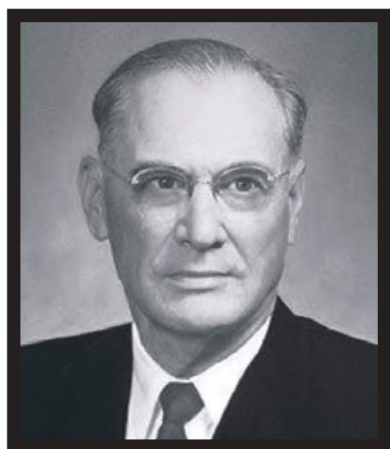
Recent Honorees

2014: Herbert Hiram Champlin, Herbert H. "Bud" Champlin, T. Boone Pickens

2015: Robert W. "Bob" Waring, Bob Hancock, Jerome Max Westheimer, Sr., James O. Puckette, Kenneth S. Johnson

2016: Wirt Franklin, Royce G. Herndon, John W. Shelton, J.L. Herndon, J. Walter Duncan Jr.

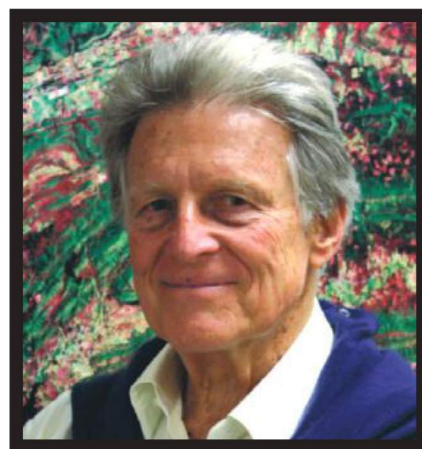
2017 LEGENDS HONOREES



T. Howard McCasland
(1895-1979) Pioneer Legend



Aubrey K. McClendon
(1959-2016) Historical Legend



Robert A. Hefner III
Living Legend

The Oklahoma Geological Foundation Awards Banquet

Each year, the Oklahoma Geological Foundation conducts its “Annual Spring Awards Banquet” to recognize and honor deserving students, teachers, and educational institutions with Grants, Scholarships, and Awards. Students and teachers throughout the State of Oklahoma attend the Awards Banquet. The Banquet continues to grow every year, as teachers and students not only are presented their respective Grants and Awards, but also have a chance to meet their peers, as well as the Foundation’s Directors and individual donors.

In 2017, the Foundation provided \$135,538 to fund the following Grants, Awards and Scholarships:

1. Frederick H. and Lois M. Kate Endowment Fellowship	\$6,000
2. Oklahoma Geological Foundation Graduate Fellowship	\$6,000
3. Suzanne Takken Memorial Fellowship	\$6,000
4. Herbert G. and Shirley A. Davis OSU Geology Fellowships (2 @ \$2,500 each)	\$5,000
5. Frederick M. Black Field Camp Grants (3 @ \$2,000 each)	\$6,000
6. OSU Summer Field Camp Grants (18 @ \$750 each)	\$13,500
7. OU Summer Field Camp Grants (26 @ \$750 each)	\$19,500
8. TU Summer Field Camp Grants (2 @ \$750 each)	\$1,500
9. Beth Cronin Elementary School Endowment: L St. E.A. Seton Catholic School	\$6,220
10. OGF Support Grant: Rock, Mineral, & Fossil Collection	\$18,000
11. OGF Gilson Support Grant: Summer Field Camp Grants (4 @ \$500 each)	\$2,000
12. OGF Support Grant: Tulsa Geoscience Center, Tulsa	\$6,000
13. OGF Support Grant: More! Rocks in Your Head, Teacher Workshop	\$6,000
14. OGF Support Grant: Newspapers in Education, Teacher Lesson Plans	\$5,000
15. OGF Support Grant: Guthrie High School, Guthrie	\$5,523
16. OGF Support Grant: Lakeview Elementary School, Yukon	\$550
17. OGF Support Grant: Tuttle Intermediate School, Tuttle	\$7,950
18. OGF Support Grant: Tuttle Intermediate School, Tuttle	\$6,600
19. OGF Support Grant: OSU AAPG Imperial Barrel Competition Team	\$1,500
20. OGF Support Grant: OU AAPG Imperial Barrel Competition Team	\$1,500
21. OGF Support Grant: Oklahoma Geological Survey, Norman	\$4,370
22. OGF Support Grant: Okarche Junior High School, Okarche	\$825



Thank you for supporting the Foundation's many educational initiatives!



2017 Investment Summary

As of December 31, 2017, the Oklahoma Geological Foundation's collective Investment Portfolio had a fair market value of \$2,507,463. This is an increase of \$159,056 over the previous year balance of \$2,348,407.

The increase was attributable to investment gains of \$232,056 (net of investment management fees) and net contributions/withdrawals of \$73,000. The Portfolio had an asset allocation at year end of 69.6% Equity, 27.3% Fixed Income and 3.1% Cash & Equivalents. Under normal circumstances and Foundation investment policy guidelines, the overall equity allocation will typically range from 60-80% and the fixed income allocation will typically make up the residual, a 20-40% allocation.

For the year ending December 31, 2017, the portfolio returned 10.2%, net of investment management fees, compared to a blended benchmark return of 11.5%. The blended benchmark is comprised of the S&P 500 Stock Index, Barclays Intermediate Government/Credit Index and the Lipper Money Market Index, weighted in accordance to the broad weights of the Portfolio. The table below provides additional performance for the Foundation's Portfolio over various time frames since inception of July 1, 2008. Since inception, the Portfolio has returned 7.3% annualized with net gains, after fees and expenses, of \$1,109,286.

A continued global economic expansion and solid corporate earnings growth provided a supportive environment for global equities in 2017. U.S. equities generated strong returns during the year, led by larger company stocks; for the year, the S&P 500 Index (large-cap U.S. Stocks) returned 21.8%. Developed International stocks fared even better with the MSCI EAFE Index returning just over 25% and Emerging Market Equities, represented by the MSCI Emerging Markets Index, were up over 37%. Additionally, the global performance gap between growth and value stock classifications (growth outperforming) persisted during the year across the capitalization spectrum. Overall, the Foundation's equity investments returned 18.4% (gross) during the year. This was modestly behind the S&P 500 Index due to the portfolio's overall value manager tilt and its allocation to small cap value stocks.

Despite higher short-term interest rates due to tighter Fed policy, longer-term interest rates remained relatively stable throughout 2017 resulting in a flattened yield curve. The Foundation's fixed income manager positioning was favorable during the year and led to outperformance relative to the Barclays Intermediate Government/Credit Index as the class returned 3.43% (gross) versus 2.14% for the benchmark. The general focus in the fixed income segment has been to maintain duration in a shortened range with allocations to both short- and intermediate-term bond strategies. The inclusion of an unconstrained approach is also made in efforts to lessen the negative impact of rising interest rate conditions on the portfolio's fixed income assets.

The Investment Policy is designed to ensure that existing and future funds managed by the Foundation will provide ample annual income for its charitable purposes in perpetuity, regardless of existing economic or market conditions.

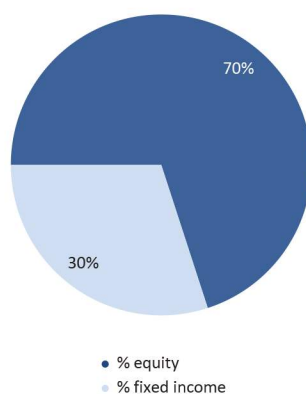


2017 Investment Summary

Current Allocation

Allocation	% of FMV
Equity	69.6%
Large Cap	34.9%
Mid Cap	7.0%
Small Cap	10.0%
International	17.8%
Other Equity	0.0%
Fixed Income	27.3%
Short	2.7%
Intermediate	22.4%
Unconstrained	2.2%
International	0.0%
Cash	3.1%
Total	100.0%

Target Allocation



Historical Returns

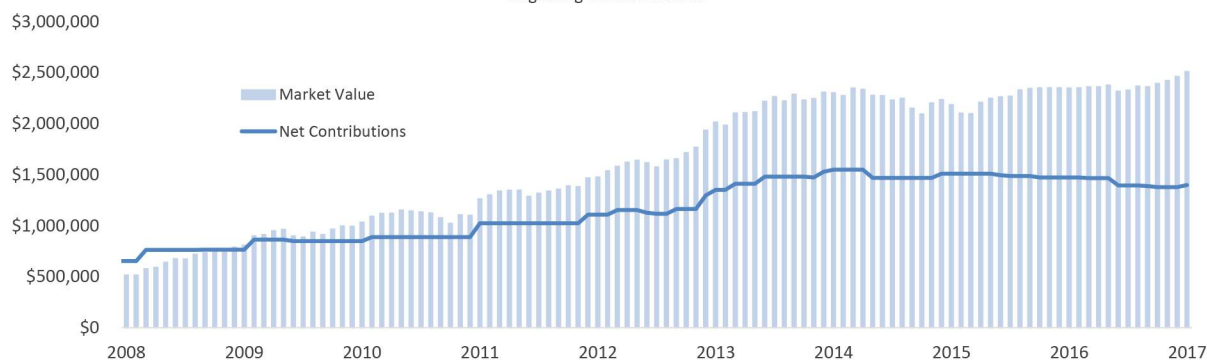
	Trailing 3 Months	Trailing 12 Months	3 Year (annualized)	5 Year (annualized)	7 Year (annualized)
OGF*	3.8%	10.2%	5.1%	7.7%	7.6%
Market Returns					
Large US Stocks	6.6%	21.8%	11.4%	15.8%	13.8%
Small US Stocks	3.3%	14.6%	10.0%	14.1%	11.6%
Developed Int'l Stocks	4.2%	25.0%	7.8%	7.9%	6.0%
Emerging Mkts Stocks	7.4%	37.3%	9.1%	4.3%	2.6%
Intermediate Bonds	-0.2%	2.1%	1.8%	1.5%	2.4%
Short Bonds	-0.2%	0.8%	0.9%	0.8%	1.0%

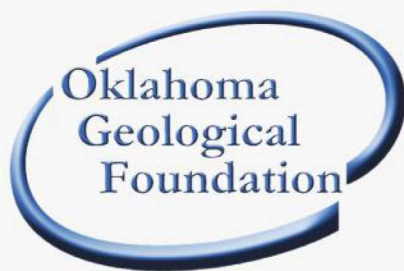
Annual Returns

Period*	
2017	10.2%
2016	9.2%
2015	-3.4%
2014	4.3%
2013	19.5%

Growth Over Time

Beginning December 2008





Supporting Earth Science Education, STEM Students, and Teachers

An area of growth the Oklahoma Geological Foundation is extremely proud of is the number of students and teachers directly affected by the Foundation's programs and grants. When a teacher or school applies for funding, the Foundation asks the applicant for an estimate of how many students are impacted as well as how many teachers are involved. The numbers given to the Foundation by the teachers are remarkable.

Listed below are some of the grants and sponsored programs where such funding has impacted countless numbers of students and teachers:

Rock, Mineral, & Fossil Collections

In April 2015, the Foundation under the direction of Larry Lunardi, developed a program to supplement Mr. Lunardi's middle school Earth Science teaching model. Mr. Lunardi volunteers his time to assist teachers as they teach Earth Science education to middle school students. This program provides a diverse collection of museum quality rocks, minerals, and fossils to schools throughout the State of Oklahoma to supplement their Earth Science education program. These collections allow the teachers the ability to teach Earth Science with actual rock, minerals, and fossils, which is a direct learning benefit for the students. As of December 31, 2017, the Foundation has distributed nearly eighty collections which has had a direct effect on approximately 10,000 students and involving over 200 teachers!

Summer Geology Field Camps

Since 2014, the Foundation has provided funds for 111 college level students to attend summer geology field camps. These students are from Oklahoma State University, University of Oklahoma, and Tulsa University. The Foundation has funded Field Camp Grants totaling over \$87,500 since 2014.

Bixby Middle School

In 2012, the Foundation provided the funds for two eighth grade Earth Science education teachers to attend a geological field camp in Boulder, Colorado. The camp is organized by the Geological Society of America and is specifically designed for Earth Science teachers. The funds provided to Bixby Middle School will annually impact approximately 300 eighth grade students and two Earth Science teachers.

Teacher Workshops

Since 2011, the Foundation has annually sponsored and participated in a full-day workshop for Earth Science teachers, called "More! Rocks in Your Head". This hands-on seminar covers a full scope of Earth Science topics and teaching method skills for the teachers to take back to the classroom, making Earth Science a fun and memorable experience for their students. Approximately 350 Earth Science teachers have participated in a total of eight workshops over the past seven years.

St. Elizabeth Ann Seton Catholic School - Edmond, Oklahoma

St. Elizabeth Ann Seton Catholic School opened a state-of-the-art science lab in the fall of 2006 to facilitate the teaching of pre-K through 8th grade Earth Science education and other sciences. The Foundation has funded grants since 2007 to help equip the lab and to establish a first-class Earth Science program. The lab is used in the education of approximately 450 students annually. In the Middle School at St. Elizabeth Ann Seton, the entire 7th grade year is solely dedicated to the study of Earth Science. Since 2009, the Foundation has funded grants totaling nearly \$42,000.

Guthrie High School

The Oklahoma Geological Foundation has provided grants to Guthrie High School since 2014. Funds from these grants have been used to purchase lab supplies, equipment to expand the Earth Science classes, text books, 30 Chrome Books with a charging cart for storage, and Earth Science demonstration models. These grants have impacted over 250 eighth grade students, as well as another 250 Guthrie High School students. The Foundation has provided funds totaling \$19,265 for grant requests within the Guthrie school system.

Tuttle Intermediate School

In 2017, Foundation funds were used to purchase Ward's Science items and materials that included a multitude of products directly related to Earth Science experiments and learning opportunities. These funds were used to purchase 30 Chrome Books, a portable charging station, and 30 headphones. A total of 300 students and six science teachers benefited from the grants, which totaled \$14,550.

EveryDay Earth Program

In mid-year of 2017, the Foundation established and began development of a new educational program called "EveryDay Earth". This is a new teaching system designed to assist teachers and students in Earth Science education and technology concepts by interactively exploring Oklahoma's landscapes. The "EveryDay Earth" program is a set of digital classroom supplements for teaching Earth Science and is designed for the 4th through 8th grade levels. When implemented, the program will consist of ten stand-alone modules, with each module, upon completion, being its own impactful deliverable product free of charge to sponsored Oklahoma schools.



The Oklahoma Geological Foundation has been able to leverage the various grants to impact a very large number of students and teachers as demonstrated by the above referenced material. These grants and programs are a direct result of the incredible generosity of the many individual donors and companies who continue to contribute year after year to the Foundation.

DIRECTED DONATIONS

FREDERICK M. BLACK SUMMER FIELD CAMP GRANT

In Memory of F. M. (Rick) Black
 Lawrence H. & Ronna Davis
 Charter Oak Production Co., LLC
 Lance Ruffel
 Eagle Drilling
 MAP Royalty, Inc.
 Anonymous

HERBERT G. & SHIRLEY A. DAVIS OKLAHOMA STATE UNIVERSITY GEOLOGY SCHOLARSHIP PROGRAM

Herbert G. & Shirley A. Davis
 In Memory of Jack Taylor
 In Memory of Connor Lee Hamilton
 In Memory of Robert W. Waring
 In Memory of William Dale Trumbly
 Terry L. & Betty Hollrah
 In Memory of Robert W. Waring

KENNETH STEWART CRONIN LECTURE SERIES PROGRAM

Thomas C. Cronin
 In Memory of James Caylor
 In Memory of Connor Lee Hamilton
 In Memory of Robert W. Waring
 In Memory of Harry Ptasynski
 In Memory of Roy Matthews

BETH CRONIN ELEMENTARY SCHOOL PROGRAM

Thomas C. Cronin
 In Memory of Denise Evans
 Robert L. & Jayne A. Gilson

THE OKLAHOMA GEOLOGICAL HIGH SCHOOL GRANT PROGRAM

Raymond M. Timpanelli

THE OKLAHOMA GEOLOGICAL FOUNDATION SUMMER FIELD CAMP GRANT

Oklahoma Chapter of SIPES
 In Memory of Robert W. Waring

SPONSORS

Red Mountain Exploration
 Lance Ruffel Oil & Gas
 Weatherford
 Ferrell Oil Co., LLC
 Cirrus Production Company
 Ward Petroleum
 Chesapeake Operating, Inc
 Devon Energy Corporation
 Anchorage Resources LLC
 American Energy Partners
 Joseph C. Struckel
 Tall Oak Midstream, LLC
 Dawson Geophysical Company
 Continental Resources
 Champlin Exploration, Inc.
 Herbert G. & Shirley A. Davis

NON-DIRECTED DONATIONS

Joel A. Alberts
 Robert W. Allen
 ExxonMobil
 Bill B. Harris
 Dale Shipley
 Herbert G. & Shirley A. Davis
 Michael R. McFeely
 In Honor of S.T. Ayers
 Robert L. Scott
 Reserve Petroleum
 Louis M. Ford, LLC
 In Memory of Louis M. Ford
 Dena Jo & John T. Perkins
 In Memory of D. Evans
 Joseph J. & Joan M. Bruns
 Kirk Kolar
 Kenneth S. Johnson
 Marilyn S. Clement
 Larry D. Smith
 Jordan C. Braun
 In Memory of James Caylor
 H. P. Trivedi
 In Memory of Tom Holland
 In Memory of Don Morris
 Jon E. & Anna B. Riseden
 David M. Pulling
 Peter J. Massion
 Terry L. & Betty Hollrah
 Michael R. & Elaine D. Root
 James S. McGhay
 Larry G. & Leellen Akers
 J. Mark & Carol Lester
 Mark D. Falk
 William M. Smith
 Harold W. Hanke
 In Memory of William Dale Trumbly
 Roger D. Wilkinson
 J. M. Poor
 Shelly Lassiter
 Gary W. Hart
 Marvin D. Woody
 Frank & Cindy Gagliardi
 Walter J. Hendrickson
 In Honor of Ralph Espach, Jr.
 Mark Svoboda

DIRECTED DONATIONS

ROBERT W. AND JO ANN WARING MEMORIAL SCHOLARSHIP PROGRAM

In Memory of Robert W. Waring
Equitable Royalty Corporation
Janice E. Waring & Michael Mahoney
Daniel K. & Susie Waring
Terry L. & Betty Hollrah
Leonard C. Dionisio, Jr.

KENNETH STEWART CRONIN LECTURE SERIES

Thomas C. Cronin
In Memory of Mason W. McLain
In Memory of Thomas Olsen
In Memory of David Martino
In Memory of William C. Payne
In Memory of Jon R. Withrow
In Memory of James P. Walker
In Memory of Kenneth E. Gibbons
In Memory of Bill D. Broughton
In Memory of Robert W. Waring

FREDERICK M. BLACK SUMMER FIELD CAMP GRANT

In Memory of F. M. (Rick) Black
MAP Royalty, Inc.
Anonymous

BETH CRONIN ELEMENTARY SCHOOL PROGRAM

Robert L. & Jayne A. Gilson
Thomas C. Cronin
In Memory of Denise Evans
In Memory of Jean Ince Simms Chandler
Robert R. Klabzuba

OKLAHOMA GEOLOGICAL FOUNDATION EXCELLENCE IN EARTH SCIENCE EDUCATION

Jason F. & Julie D. Hamilton

SPONSORS

GE Foundation
Baker Hughes
Peter Gill
Ancova Energy
Frank & Cindy Gagliardi
Herbert G. & Shirley A. Davis
Lawrence H. & Ronna Davis
Thomas C. Cronin
BancFirst Trust and Investment Management
Yale Oil Association
Ward Petroleum
Sandridge Energy, Inc.
Charles A. Ferrell
Boone Pickens School of Geology, Oklahoma State University

NON-DIRECTED DONATIONS

Joel A. Alberts
Dorothy M. & Terry N. Marple
Patrick M. Tolson
David G. Campbell
Kirk Kolar
Ray H. Potts
Louis M. Ford, LLC
In Memory of Louis M. Ford
Robert W. Allen
Joseph J. & Joan M. Bruns
Charter Oak Production Co., LLC
William W. Smith
In Memory of Mason W. McLain
In Honor of Barth W. Bracken
Jerome Westheimer Family Foundation
Sharlene S. Branham
Ray H. Potts
Peter J. Massion
Horse Creek Oil Company
Anonymous
Gerald R. Allen
GE Foundation
Michael R. & Elaine D. Root
Kenneth S. Johnson
J. Mark & Carol Lester
Travis Glauser
MAP Royalty, Inc.
Sam Roark
Reserve Petroleum Company
H. P. Trivedi
Walter J. Hendrickson
In Memory of James P. Walker
Shelly Lassiter
Marvin D. Woody
Anonymous
Mark S. Svoboda
Marilyn S. Clement
Jordan C. Braun
In Memory of Jon Withrow
In Memory of Bill D. Broughton
Robert L. & Jayne A. Gilson
Travis Wilson
James L. Franks
Robert R. Klabzuba

DIRECTED DONATIONS

THE FREDERICK M. BLACK SUMMER FIELD CAMP GRANT

In Memory of F.M. (Rick) Black
Anonymous
MAP Royalty, Inc

HERBERT G. & SHIRLEY A. DAVIS OKLAHOMA STATE UNIVERSITY GEOLOGY SCHOLARSHIP PROGRAM

Herbert G. & Shirley A. Davis

ROBERT W. & JO ANN WARING MEMORIAL SCHOLARSHIP PROGRAM

Equitable Royalty Corporation
Janice E. Waring & Michael Mahoney

KENNETH STEWART CRONIN LECTURE SERIES PROGRAM

Thomas C. Cronin
In Memory of Charles Ming

BETH CRONIN ELEMENTARY SCHOOL PROGRAM

Larry G. & Leellen Akers
Robert L. & Jayne A. Gilson
Thomas C. Cronin
In Memory of Paula Ming

THE OKLAHOMA GEOLOGICAL HIGH SCHOOL GRANT PROGRAM

Raymond M. Timpanelli

LANCE RUFFEL & OKLAHOMA GEOLOGICAL FOUNDATION INNOVATIONS IN EARTH SCIENCE EDUCATION PROGRAM

Robert L. & Jayne A. Gilson

NON-DIRECTED DONATIONS

Stephen W. Kage
Patrick M. Tolson
Harold W. Hanke
Robert W. Allen
Michael A. Pollok
Bill B. Harris
Duncan Oil Properties
Joseph J. & Joan M. Bruns
David G. Campbell
Ronald J. Krakowski
Terry L. & Betty Holtrah
Garry Crain
Thomas C. Cronin
Wirt Franklin Petroleum, LLC
Michael R. & Elaine D. Root
Kirk Kolar
Travis Glauser
John W. Shelton
GE Foundation
William Cory Beck
Sherrill D. Howery
Kenneth S. Johnson
Mark D. & Kim Falk
James S. McGhay
Landon W. & Linda K. Holman
Peter J. Massion
Jack P.F. Bowles
Shelly Lassiter
Marvin D. Woody
Gregory A. & Debra A. Wilson
Ron & Betty Clymer
In Honor of Annelies Burks
Frank Thompson
William M. Smith
In Honor of Barth W. Bracken
Herb Martin
Mark Svoboda

SPONSORS

Herbert G. & Shirley A. Davis
Lowery Land Co, Inc
Richard & Jackie Snyder
Landon W. & Linda K. Holman
Thomas C. Cronin
Ferrell Oil Co., LLC
Lawrence H. & Ronna Davis
Ancova Energy
Frank & Cindy Gagliardi
Nicholas Terech
David Clupper
Drilling Info
Arvine Pipe and Supply Co., Inc

TGS
Devin P. & Elizabeth K. Dennie
J. Mark & Carol Lester
GHK Companies
BancFirst Trust and Investment Management
Michael Kuykendall
Murfin Drilling Co.
The Reserve Petroleum Company
Jeff Baldwin
Lance Ruffel Oil & Gas Corporation

DIRECTED DONATIONS

THE FREDERICK M. BLACK SUMMER FIELD CAMP GRANT

In Memory of F.M. (Rick) Black
Lawrence H. & Ronna Davis
Anonymous
MAP Royalty, Inc

HERBERT G. & SHIRLEY A. DAVIS OKLAHOMA STATE UNIVERSITY GEOLOGY SCHOLARSHIP PROGRAM

Herbert G. & Shirley A. Davis

ROBERT W. & JO ANN WARING MEMORIAL SCHOLARSHIP PROGRAM

Equitable Royalty Corporation

KENNETH STEWART CRONIN LECTURE SERIES PROGRAM

Thomas C. Cronin
In Memory of Charles Ming

BETH CRONIN ELEMENTARY SCHOOL PROGRAM

Larry G. & Leellen Akers
Thomas C. Cronin
In Memory of Julie Hamilton
Terry L. & Betty Hollrah
In Memory of Julie Hamilton

THE OKLAHOMA GEOLOGICAL FOUNDATION SUMMER FIELD CAMP PROGRAM

Robert L. & Jayne A. Gilson

OKLAHOMA GEOLOGICAL FOUNDATION EXCELLENCE IN EARTH SCIENCE EDUCATION

Jason F. & Julie D. Hamilton

NON-DIRECTED DONATIONS

Patrick M. Tolson
Marvin Abbott
In Honor of John W. Shelton
J. Mark & Carol Lester
David G. Campbell
Mark S. Svoboda
Raymond M. Timpanelli
Joel A. Alberts
Michael R. & Elaine D. Root
Michael Powell
Ferrell Oil Co., LLC
Joseph J. & Joan M. Bruns
Lance & Cindy Ruffel
John W. Shelton
Kenneth S. Johnson
Thomas E. Davis
H. P. Trivedi
In Memory of Tom Hendrick
Sherrill D. Howerly
Kathy Lippert
Peter J. Massion
Kirk Kolar
Sam Roark
Greg & Melinda Flournoy
William M. Smith
In Honor of Barth W. Bracken
Peter Gill
Marvin D. Woody
Charter Oak Production Co., LLC
Scott D. Sachs
Carl E. Gungoll Exploration, LLC
Dale Shipley

SPONSORS

Rick & Mary Fritz
Brian J. & Leslie Smith
Ray H. Potts
Hauschild Resources
Lawrence H. & Ronna Davis
Thomas C. Cronin
The Reserve Petroleum Company
Steve Ladner
Sam Roark
Steve Chipera
Jason Kneedy
Steve Knowles
Todd Stephenson
Mark D. & Kim Falk
Brian Bayliss
Ancova Energy
William Cory Beck

John Kapchinske
Shelly Lassiter
Frank & Cindy Gagliardi
Herbert G. & Shirley A. Davis
Murfin Drilling Company, Inc
Ascent Resources Operating
Gregg McDonald
Lowry Land Co., Inc
Lesley Evans
Red Mountain Exploration
Patterson UTI
J. Mark & Carol Lester
Tapstone Energy
GHK Companies
BancFirst Trust and Investment Management
Carol & Robert Hefner IV
Oakspring Energy

Herbert G. & Shirley A. Davis Oklahoma State University Geology Scholarship: (\$5,000)

Recipient: Miranda Childress (\$2,500), Oklahoma State University

Thesis: Sequence Stratigraphic Architecture of a Mid-Continent Mississippian Outcrop in Jane, Missouri

Recipient: Preston Doll (\$2,500), Oklahoma State University

Thesis: Determining Structural Influence on Depositional Sequences in Carbonates Using Core-calibrated Wireline Logs: Mississippian Carbonates, Midcontinent U.S.A.

The Frederick H. & Lois M. Kate Award: (\$5,000)

Recipient: Jean Dudek, University of Tulsa

Thesis: Understanding the Stratigraphy, Geometry, and Kinematics of the Keokuk Fault Zone in East Central Oklahoma

The Oklahoma Geological Foundation Excellence in Earth Science Education Awards Program: (\$2,500)

Recipient: OPUBCO Communications Group, "Newspapers in Education"

Grant proceeds for lesson plans associated with Earth Science Education Series "Oklahoma Rocks", topic in 2014 "What Lies Beneath." The "Oklahoma Rocks" Series reaches more than 700 schools and over 15,000 students in the State of Oklahoma

The Oklahoma Geological Foundation Elementary School Grant: (\$2,500)

Recipient: Newcastle Elementary School

Financial support to fund a portion of a science camp for fifth graders to attend Camp Goddard, located next to Arbuckle Lake near Sulfur, where geology and earth science is taught in an outdoor setting.

The Suzanne Takken Memorial Award: (\$5,000)

Recipient: Beth Vanden Berg, Oklahoma State University

Thesis: Predicting Carbonate Petrophysical Properties Using Sonic Velocity and Characterization of Pore Architecture in Carbonate Mudrocks:
An example from the Mississippian Limestone of the Mid-Continent.

Beth Cronin Elementary School Program: (\$5,000)

Recipient: St. Elizabeth Ann Seaton Catholic School, Edmond

Science teaching equipment and materials for science lab

The Oklahoma Geological Foundation Graduate Fellowship Award: (\$5,000)

Recipient: Bryan W. Turner, University of Oklahoma

Thesis: Utilization of Chemostratigraphic Proxies for Generating Sequence Stratigraphic Frameworks in Mudrocks and Shales

The Oklahoma Geological Summer Field Camp Grant: (\$10,500)

Recipients: Geology students from University of Oklahoma & Oklahoma State University

Funds awarded to undergraduate geology students to supplement 2014 Summer Field Camp expenses. Eight students received \$1,000 each, and five students received \$500 each, for a total of \$10,500.

The Oklahoma Geological Foundation High School Grant: (\$3,048)

Recipient: Edmond North High School

To support to purchase additional apps to teach Earth Science education, two apple TV's, and a wireless device used to connect the iPads to smart board.

The Oklahoma Geological Foundation Middle School Grant: (\$2,500)

Recipient: Newcastle Elementary School

Financial support to fund a portion of a science camp for fifth graders to attend Camp Goddard, located next to Arbuckle Lake near Sulfur, where geology and earth science is taught in an outdoor setting.

The Philip Boyle Foundation & Oklahoma Geological Foundation Elementary and Secondary School Program: (\$3,000)

Recipients: Elementary, middle & high school Earth Science teachers from schools throughout the State of Oklahoma.

Proceeds of Grant used to sponsor a full-day Earth Science workshop, titled "More! Rocks in Your Head." This is a nationally acclaimed, hands-on workshop, covering a full scope of Earth Science topics and skills for the teachers, who can take these disciplines back to the classroom, making Earth Science a fun and memorable experience for their students. A total of 45 teachers attended the workshop.

The Charles E. Branham Library Program: (\$2,500)

Recipient: OPUBCO Communications Group, "Newspapers in Education"

Grant proceeds for lesson plans associated with Earth Science education Series "Oklahoma Rocks", topic in 2014 "What Lies Beneath". The "Oklahoma Rocks" Series reaches more than 700 schools and over 15,000 students in the State of Oklahoma.

The John Gatchell Earth Science Teaching Program: (\$3,000)

Recipients: Elementary, middle & high school Earth Science teachers from schools throughout the State of Oklahoma.

Proceeds of Grant used to sponsor a full-day Earth Science workshop, titled "More! Rocks in Your Head." This is a nationally acclaimed, hands-on workshop, covering a full scope of Earth Science topics and skills for the teachers, who can take these disciplines back to the classroom, making Earth Science a fun and memorable experience for their students. A total of 45 teachers attended the workshop

The Lance Ruffel & Oklahoma Geological Foundation Innovations in Earth Science Education Program: (\$5,000)

Recipient: Tulsa Geoscience Center

Grant awarded to support various operating costs for the Tulsa Geoscience Center. The Geoscience Center educates students and the general public on energy, geology, and other Earth Science disciplines.

The Kenneth Stewart Cronin Lecture Series Program: (\$969)

Recipients: Elementary, middle & high school Earth Science teachers from schools throughout the State of Oklahoma.

Expenses for teacher workshop, "More! Rocks in Your Head"

William A. Clement Guthrie Middle and High School Grant: (\$5,341)

Recipient: Guthrie High School

Grant awarded to support the purchase of lab supplies & equipment to expand Earth and Environmental classes at Guthrie High School, for 9th-12th grade students.

The Shirley A. Davis Program for Earth Science Education: (\$2,000)

Recipient: St. Mary's Episcopal School, Oklahoma City

St. Mary's Episcopal School adopted Core Knowledge curriculum. Funds were used to enhance Earth Science curriculum for kindergarten students.

The Frederick M. Black Summer Field Camp Grant: (\$4,500)

Recipients: C.J. Appleseth (\$1,500), Oklahoma State University
Lauren McGraw, (\$1,500), University of Oklahoma
Becca Bratcher (\$1,500), University of Tulsa

Funds awarded to undergraduate geology students to supplement 2014 Summer Field Camp expenses.

The Shirley A. Davis Program for Earth Science Education: (\$2,187)

Recipient: Prue Public School

Grant awarded to support and equip middle school science lab with equipment to facilitate Earth Science activities

Herbert G. & Shirley A. Davis Oklahoma State University Geology Scholarship: (\$5,000)

Recipient: Danielle Martin (\$2,500), Oklahoma State University

Thesis: Characterization of Large Carbonate Concretions, Woodford Shale, Criner Hills Area, Oklahoma

Recipient: Yulun Wang (\$2,500), Oklahoma State University

Thesis: High-Resolution Sequence Stratigraphy and Reservoir Characterization of Mississippian Strata, Southern Mid-Continent, USA

The Frederick H. & Lois M. Kate Award: (\$5,000)

Recipient: John S. Hornbuckle, University of Oklahoma

Thesis: Process Sedimentology of the Guadeloupean Rader Limestone, Delaware Basin: Outcrop to Subsurface

The Oklahoma Geological Foundation Excellence in Earth Science Education Awards Program: (\$2,500)

Recipient: OPUBCO Communications Group, "Newspapers in Education"

Grant proceeds for lesson plans associated with Earth Science education Series "Oklahoma Rocks", topic in 2015 "Exploring Geology in the State of Oklahoma". The "Oklahoma Rocks" Series reaches more than 700 schools and over 15,000 students in the State of Oklahoma.

The Oklahoma Geological Foundation Elementary School Grant: (\$3,000)

Recipients: Elementary, middle & high school Earth Science teachers from schools throughout the State of Oklahoma. The workshop was held in Tulsa.

Proceeds of Grant used to sponsor a full-day Earth Science workshop, titled "More! Rocks in Your Head." This is a nationally acclaimed, hands-on workshop, covering a full scope of Earth Science topics and skills for the teachers, who can take these disciplines back to the classroom, making Earth Science a fun and memorable experience for their students. A total of 28 teachers attended the workshop.

The Suzanne Takken Memorial Award: (\$5,000)

Recipient: Whitney Campbell, University of Tulsa

Thesis: A Stratal Correlation Study Utilizing Petrographic and Geochemical Analyses to Delineate Marker Bed Age

Beth Cronin Elementary School Program: (\$5,005)

Recipient: St. Elizabeth Ann Seaton Catholic School, Edmond

Science teaching equipment and materials for science lab

The Oklahoma Geological Foundation Summer Field Camp Grant: (\$11,000)

Recipients: Geology students from University of Oklahoma & Oklahoma State University, with 11 students each receiving \$1,000.

Funds awarded to undergraduate geology students to supplement 2015 Summer Field Camp expenses.

The Oklahoma Geological Foundation High School Grant: (\$3,000)

Recipients: Elementary, middle & high school Earth Science teachers from schools throughout the State of Oklahoma. The workshop was held in Oklahoma City.

Proceeds of Grant used to sponsor a full-day Earth Science workshop, titled "More! Rocks in Your Head." This is a nationally acclaimed, hands-on workshop, covering a full scope of Earth Science topics and skills for the teachers, who can take these disciplines back to the classroom, making Earth Science a fun and memorable experience for their students. A total of 48 teachers attended the workshop.

The Oklahoma Geological Foundation Middle School Grant: (\$3,000)

Recipients: Elementary, middle & high school Earth Science teachers from schools throughout the State of Oklahoma. The workshop was held in Oklahoma City.

Proceeds of Grant used to sponsor a full-day Earth Science workshop, titled "More! Rocks in Your Head." This is a nationally acclaimed, hands-on workshop, covering a full scope of Earth Science topics and skills for the teachers, who can take these disciplines back to the classroom, making Earth Science a fun and memorable experience for their students. A total of 48 teachers attend the workshop

The Philip Boyle Foundation & Oklahoma Geological Foundation Elementary and Secondary School Program: (\$2,500)

Recipient: OPUBCO Communications Group, "Newspapers in Education"

Grant proceeds for lesson plans associated with Earth Science Education Series "Oklahoma Rocks", topic in 2015 "Exploring Geology in the State of Oklahoma". The "Oklahoma Rocks" Series reaches more than 700 schools and over 15,000 students in the State of Oklahoma.

The Charles E. Branham Library Program: (\$1,350)

Recipient: Washington Elementary School, Clinton

Funds from Grant used to purchase small rock and mineral sets to teach Earth Science education in grades 5 & 6

The John Gatchell Earth Science Teaching Program: (\$3,000)

Recipients: Trinity School, Oklahoma City

Proceeds of Grant used to purchase 5 iPads, 5 Otterbox Cases, and other hands on materials to supplement the iPads and teaching of Earth Science.

The Lance Ruffel & Oklahoma Geological Foundation Innovations in Earth Science Education Program: (\$8,000)

Recipient: Oklahoma schools, throughout the State of Oklahoma, kindergarten through grade 12

Grant used to purchase Rock, Mineral, & Fossil Collections, to be distributed to schools throughout the State of Oklahoma to promote geology and Earth Science education

William A. Clement Guthrie Middle and High School Grant: (\$8,400)

Recipient: Guthrie High School, Guthrie

Grant awarded to support the purchase of Earth Science education books, to be used in conjunction with teaching five Earth Science education classes. A total of 100 books were purchased.

The Shirley A. Davis Program for Earth Science Education: (\$5,000)

Recipient: St. Mary's Episcopal School, Edmond

Funds used to purchase small rock & mineral sets, lab supplies, and other Earth Science kits, games, and geologic model kits for grades 3, 4, & 5.

The Frederick M. Black Summer Field Camp Grant: (\$4,500)

Recipients: Bryan Clappe, (\$1,500), Oklahoma State University

Brian Gallagher, (\$1,500), University of Oklahoma

Karson Bizzell (\$1,500), University of Tulsa

Funds awarded to undergraduate geology students to supplement 2015 Summer Field Camp expenses.

The Lance Ruffel & Oklahoma Geological Foundation Innovations in Earth Science Education Program: (\$3,545)

Recipients: Trinity School, Oklahoma City

Proceeds of Grant used to purchase 5 iPads, 5 Otterbox Cases, and other hands on materials to supplement the iPads and teaching of Earth Science.

The Robert W. & Jo Ann Waring Memorial Scholarship: (\$1,000)

Recipient: Students who attended a core workshop at Oklahoma State University

Grant proceeds were used to pay for 20 students to attend a core workshop titled "Mid-Continent Conventional & Unconventional Reservoirs."

The Robert W. & Jo Ann Waring Memorial Scholarship: (\$3,000)

Recipient: Oklahoma schools, throughout the State of Oklahoma, kindergarten through grade 12

Grant used to purchase Rock, Mineral, & Fossil Collections, to be distributed to schools throughout the State of Oklahoma to promote geology and Earth Science education.

The Shirley A. Davis Program for Earth Science Education: (\$2,000)

Recipient: Oklahoma schools, throughout the State of Oklahoma, kindergarten through grade 12

Grant used to purchase Rock, Mineral, & Fossil Collections, to be distributed to schools throughout the State of Oklahoma to promote geology and Earth Science education.

The Oklahoma Geological Foundation Non-Directed Funds: (\$5,000)

Recipient: Tulsa Geoscience Center

Grant awarded to support various operating costs for the Tulsa Geoscience Center. The Geoscience Center educates students and the general public on energy, geology, and other earth science disciplines. Students K thru 12 are exposed to rock and mineral identification, fossils, fluorescence, porosity, permeability, the oil and gas industry, earthquakes, geologic time, crude oil and natural gas. Students from all over the State of Oklahoma take day long field trips to visit the Center

The Oklahoma Geological Foundation Non-Directed Funds: (\$600)

Recipient: Immanuel Lutheran Christian Academy, Broken Arrow

Grant funds to be used to purchase rock set and posters to complete "A Rock is Born" activities, mineral sets to complete mineral identification activities and fossil sets.

The Oklahoma Geological Foundation Non-Directed Funds: (\$1,250)

Recipient: Oklahoma City Geological Society

Grant funds to be used to sponsor Society's continuing educational workshop.

The Oklahoma Geological Foundation Non-Directed Funds: (\$584)

Recipients: Elementary, middle & high school Earth Science teachers from schools throughout the State of Oklahoma. The workshop was held in Oklahoma City.

Proceeds of Grant used to sponsor a full-day Earth Science workshop, titled "More! Rocks in Your Head." This is a nationally acclaimed, hands-on workshop, covering a full scope of Earth Science topics and skills for teachers, who can take these disciplines back to the classroom, making Earth Science a fun and memorable experience for their students. A total of 48 teachers participated in the workshop

The Oklahoma Geological Foundation Graduate Fellowship Award: (\$5,000)

Recipients: Ashley Dupont, Oklahoma State University

Thesis: Stable Isotope Geochemistry and its Relationship to High-Resolution Sequence Stratigraphy in the Mississippian of North Central Oklahoma

Herbert G. & Shirley A. Davis Oklahoma State University Geology Scholarship: (\$5,000)

Recipient: Georgina Lukoczki (\$2,500), Oklahoma State University

Thesis: Dolomitization History of Middle Triassic Shallow Marine Deposits in Southwestern Hungary

Recipient: John Hunt (\$2,500), Oklahoma State University,

Thesis: Conodont Biostratigraphy in the "Mississippian Limestone" Linking Subsurface Carbonates in Central Oklahoma to Outcrop Equivalents on the Western Flank of the Ozarks

The Frederick H. & Lois M. Kate Award: (\$5,000)

Recipient: Mercy Achang, Oklahoma State University

Thesis: Variation in Moisture Content and Particle Size on the Determination of Permeability in Crushed Shale Samples: Implications for Hydrocarbon Mobility in Tight Rock Reservoirs

The Oklahoma Geological Foundation Excellence in Earth Science Education Awards Program: (\$2,500)

Recipient: OPUBCO Communications Group, "Newspapers in Education"

Grant proceeds for lesson plans associated with Earth Science education Series "Oklahoma Rocks", topic in 2015 "Fossils come Alive". The "Oklahoma Rocks" Series reaches more than 700 schools and over 15,000 students in the State of Oklahoma.

The Oklahoma Geological Foundation Elementary School Grant: (\$4,500)

Recipient: Oklahoma Schools, throughout the State of Oklahoma, kindergarten through grade 12

Grant used to purchase Rock, Mineral, & Fossil Collections, to be distributed to schools throughout the State of Oklahoma to promote geology and Earth Science education

The Suzanne Takken Memorial Award: (\$5,000)

Recipient: Jennifer Roberts, University of Oklahoma

Thesis: A Paleomagnetic and Diagenetic Study of the Woodford Shale, Oklahoma.

Beth Cronin Elementary School Program: (\$4,000)

Recipient: St. Elizabeth Ann Seaton Catholic School, Edmond

Support awarded for the purchase of equipment & materials for the science lab

The Oklahoma Geological Foundation Summer Field Camp Grant: (\$7,500)

Recipients: Students from Oklahoma State University, University of Oklahoma, and the University of Tulsa, with a total of 10 students receiving \$750 each.

Funds awarded to undergraduate geology students to supplement 2016 Summer Field Camp expenses.

The Oklahoma Geological Foundation Summer Field Camp Grant: (\$2,250)

Recipients: Students from Oklahoma State University, University of Oklahoma, and the University of Tulsa, with a total of 9 students receiving \$250 each.

Funds awarded to undergraduate geology students to supplement 2016 Summer Field Camp expenses.

The Oklahoma Geological Foundation High School Grant: (\$3,000)

Recipients: Elementary, middle & high school Earth Science teachers from schools throughout the State of Oklahoma.

Proceeds of grant used to sponsor a full-day Earth Science workshop, titled "More! Rocks in Your Head." This is a nationally acclaimed, hands-on workshop, covering a full scope of Earth Science topics and skills for the teachers, who can take these disciplines back to the classroom, making Earth Science a fun and memorable experience for their students. A total of 33 teachers participated in the workshop

The Oklahoma Geological Foundation Middle School Grant: (\$4,500)

Recipient: Oklahoma schools, all over the State of Oklahoma, kindergarten through grade 12

Grant used to purchase Rock, Mineral, & Fossil Collections, to be distributed to schools throughout the State of Oklahoma to promote geology and Earth Science education

The Philip Boyle Foundation & Oklahoma Geological Foundation Elementary and Secondary School Program: (\$2,500)

Recipient: OPUBCO Communications Group, "News Papers in Education"

Grant proceeds for lesson plans associated with Earth Science education Series "Oklahoma Rocks", topic in 2015 "Fossils come Alive". The "Oklahoma Rocks" Series reaches more than 700 schools and over 15,000 students in the State of Oklahoma.

The Charles E. Branham Library Program: (\$2,500)

Recipient: Tulsa Geoscience Center

Grant awarded to support various operating costs for the Tulsa Geoscience Center. The Geoscience Center educates students and the general public on energy, geology, and other earth science disciplines. Students K thru 12 are exposed to rock and mineral identification, fossils, fluorescence, porosity, permeability, the oil and gas industry, earthquakes, geologic time, crude oil and natural gas. Students from all over the State of Oklahoma take day long field trips to visit the Center.

The John Gatchell Earth Science Teaching Program: (\$3,000)

Recipients: Elementary, middle & high school Earth Science teachers from schools throughout the State of Oklahoma.

Proceeds of Grant used to sponsor a full-day Earth Science workshop, titled "More! Rocks in Your Head". This is a nationally acclaimed, hands-on workshop, covering a full scope of Earth Science topics and skills for the teachers, who can take these disciplines back to the classroom, making Earth Science a fun and memorable experience for their students. A total of 33 teacher participated in the workshop.

The Lance Ruffel & Oklahoma Geological Foundation Innovations in Earth Science Education Program: (\$9,000)

Recipient: Oklahoma Schools, throughout the State of Oklahoma, kindergarten through grade 12

Grant used to purchase Rock, Mineral, & Fossil Collections, to be distributed to schools throughout the State of Oklahoma to promote geology and Earth Science education

William A. Clement Guthrie Middle and High School Grant: (\$7,006)

Recipient: Guthrie High School

Grant awarded to support the purchase of 30 Chromebooks and a storage/recharge cart to be used exclusive to teach Earth Science education

The Frederick M. Black Summer Field Camp Grant: (\$4,500)

Recipients: Michelle Lutiker, (\$1,500), Oklahoma State University

Sama Khawaja, (\$1,500), University of Oklahoma

Kristen Gunn, (\$1,500), University of Tulsa

Funds awarded to undergraduate geology students to supplement 2016 Summer Field Camp expenses.

The Robert W. & Jo Ann Waring Memorial Scholarship: (\$2,500)

Recipient: Tulsa Geoscience Center

Grant awarded to support various operating costs for the Tulsa Geoscience Center. The Geoscience Center educates students and the general public on energy, geology, and other earth science disciplines. Students K thru 12 are exposed to rock and mineral identification, fossils, fluorescence, porosity, permeability, the oil and gas industry, earthquakes, geologic time, crude oil and natural gas. Students from all over the State of Oklahoma take day long field trips to visit the Center.

The Oklahoma Geological Foundation Non-Directed Funds: (\$1,800)

Recipient: Oklahoma State University Teacher Program

Grant used to fund teacher enrollment in the G.E.T. Program for teachers

The Shirley A. Davis Program for Earth Science Education: (\$2,235)

Recipient: Bixby Middle School

Grant used to fund two teachers from Bixby Middle school to attend a week long geological field trip in Colorado for Earth Science teachers. The Field Trip is organized by Geological Society of America.

The Oklahoma Geological Foundation Graduate Fellowship Award: (\$5,000)

Recipient: Andrew Basnett, University of Tulsa

Thesis: Mudrock Chemoprovenance of the Devonian Mississippian Woodford shale in the Anadarko Basin and Cherokee Platform

The Oklahoma Geological Foundation Non-Directed Funds: (\$600)

Recipient: Oklahoma schools, throughout the State of Oklahoma, kindergarten through grade 12

Grant used to purchase Rock, Mineral, & Fossil Collections, to be distributed to schools throughout the State of Oklahoma to promote geology and Earth Science education

The Oklahoma Geological Foundation Non-Directed Funds: (\$300)

Recipients: Elementary, middle & high school Earth Science teachers from schools throughout the State of Oklahoma.

Proceeds of grant used to sponsor (misc. charges) a full-day Earth Science workshop, titled "More! Rocks in Your Head." This is a nationally acclaimed, hands-on workshop, covering a full scope of Earth Science topics and skills for the teachers, who can take these disciplines back to the classroom, making Earth Science a fun and memorable experience for their students. A total of 33 students participated in the workshop.

Herbert G. & Shirley A. Davis Oklahoma State University Geology Scholarship: (\$5,000)

Recipient: Oyeleye Adeboye (\$2,500), Oklahoma State University

Thesis: Factors Impacting Organic Matter Presentation in Epeiric Seas: Insights from the Mississippian Limestone

Recipient: Justin Allen (\$2,500), Oklahoma State University

Thesis: Stratigraphy, Depositional Environment and Reservoir Characterization of the Layton and Osage-Layton Sandstones of North Central Oklahoma

The Frederick H. & Lois M. Kate Award: (\$6,000)

Recipient: Nicklos Marti, University of Tulsa

Thesis: Sequence Stratigraphy of the Boggy Formation, Sans Bois Mountains, Southeastern Oklahoma

The Oklahoma Geological Foundation Excellence in Earth Science Education Awards Program: (\$3,000)

Recipient: Tulsa Geoscience Center

Grant awarded to support various operating costs for the Tulsa Geoscience Center. The Geoscience Center educates students and the general public on energy, geology, and other earth science disciplines. Students K thru 12 are exposed to rock and mineral identification, fossils, fluorescence, porosity, permeability, the oil and gas industry, earthquakes, geologic time, crude oil and natural gas. Students from all over the State of Oklahoma take day long field trips to visit the Center.

The Oklahoma Geological Foundation Elementary School Grant: (\$4,500)

Recipient: Oklahoma schools, throughout the State of Oklahoma, kindergarten through grade 12

Grant used to purchase Rock, Mineral, & Fossil Collections, to be distributed to schools throughout the State of Oklahoma to promote geology and Earth Science education

Beth Cronin Elementary School Program: (\$6,220)

Recipient: St. Elizabeth Ann Seaton Catholic School, Edmond

Support awarded for the purchase of online learning tool, "Gizmos". With "Gizmos", students can run controlled virtual science experiments in the classroom or at home. Using "Gizmos", students can manipulate key variables, generate and test hypotheses, and engage in extensive "what-if" experimentation to develop a deep understanding of challenging concepts.

The Suzanne Takken Memorial Award: (\$6,000)

Recipient: Ibukunoluwa-Bode-Omoleye, Oklahoma State University

Thesis: NMR and Pore-Scale Characterization of Carbonate Mudrocks: Case Study from the Mississippian-Aged Unconventional Carbonates of the Southern Mid-Continent, USA

The Oklahoma Geological Foundation Summer Field Camp Grant: (\$34,500)

Recipients: Students from Oklahoma State University, University of Oklahoma, and the University of Tulsa, with a total of 46 students receiving \$750 each.

Funds awarded to undergraduate geology students to supplement 2017 Summer Field Camp expenses.

The Oklahoma Geological Foundation Summer Field Camp Grant: (\$2,000)

Recipients: Students from Oklahoma State University, University of Oklahoma, and the University of Tulsa, with a total of 4 students receiving \$500 each.

Funds awarded to undergraduate geology students to supplement 2017 Summer Field Camp expenses.

The Oklahoma Geological Foundation High School Grant: (\$6,000)

Recipients: Elementary, middle & high school Earth Science teachers from schools throughout the State of Oklahoma. The workshop "More! Rocks in Your Head" was held Oklahoma City, on the campus of Chesapeake Energy. Over 40 teachers participated in the workshop.

Proceeds of Grant used to sponsor a full-day Earth Science workshop, titled "More! Rocks in Your Head." This is a nationally acclaimed, hands-on workshop, covering a full scope of Earth Science topics and skills for the teachers, who can take these disciplines back to the classroom, making Earth Science a fun and memorable experience for their students.

The Oklahoma Geological Foundation Middle School Grant: (\$4,500)

Recipient: Oklahoma schools, throughout the State of Oklahoma, kindergarten through grade 12

Grant used to purchase Rock, Mineral, & Fossil Collections, to be distributed to schools all over the state of Oklahoma to promote geology and Earth Science education.

The Philip Boyle Foundation & Oklahoma Geological Foundation Elementary and Secondary School Program: (\$7,950)

Recipients: Tuttle Intermediate School

Proceeds of Grant used to purchase 30 chrome books, a portable charging station, and 30 headphones for the chromebooks.

The Charles E. Branham Library Program: (\$4,370)

Recipient: Oklahoma Geological Survey, Norman

Funds awarded to fund two projects. The first project is the purchase of books to develop a Traveling Library, approximately 75 books all related to Earth Science. The second project is the purchase of 500 starter rock, mineral, & fossil collections to be used in conjunction with the Traveling Library. The two projects are appropriately named "GeoBooks" & "GeoKids".

The John Gatchell Earth Science Teaching Program: (\$3,000)

Recipient: Tulsa Geoscience Center

Grant awarded to support various operating costs for the Tulsa Geoscience Center. The Geoscience Center educates students and the general public on energy, geology, and other earth science disciplines. Students K thru 12 are exposed to rock and mineral identification, fossils, fluorescence, porosity, permeability, the oil and gas industry, earthquakes, geologic time, crude oil and natural gas. Students from all over the State of Oklahoma take day long field trips to visit the Center.

The Lance Ruffel & Oklahoma Geological Foundation Innovations in Earth Science Education Program: (\$10,230)

Recipient: Oklahoma schools (\$9,000), throughout the State of Oklahoma, kindergarten through grade 12

Grant used to purchase Rock, Mineral, & Fossil Collections, to be distributed to schools all over the State of Oklahoma to promote geology and Earth Science education

Recipient: Tuttle Intermediate School (\$3,300)

Grant used to fund the purchase at Ward's Science a multitude of items directly related to Earth Science experiments and learning opportunities. The items selected will assist in teaching weather, wave, minerals, rocks, contour mapping and microscopic studies.

William A. Clement Guthrie Middle and High School Grant: (\$5,523)

Recipient: Guthrie High School

Grant awarded to support the purchase of lab equipment and supplies as well as demonstration models for high school science. The Models will include earthquake simulators, wavelength demonstrators, Electronic balances for labs, astronomy lab kits, a weather station, lightning/electricity demonstrations, and other earth science equipment.

The Frederick M. Black Summer Field Camp Grant: (\$6,000)

Recipients: Toby Williams (\$2,000), Oklahoma State University

Sheridan Mullen (\$2,000), University of Oklahoma

Lauran Drummond (\$2,000), University of Tulsa

Funds awarded to undergraduate geology students to supplement 2017 Summer Field Camp expenses.

The Robert W. & Jo Ann Waring Memorial Scholarship: (\$6,300)

Recipients: Boone Pickens School of Geology (\$1,500), Oklahoma State University & ConocoPhillips School of Geology and Geophysics (\$1,500), University of Oklahoma
Funds used to support teams from Oklahoma State University and University of Oklahoma in the AAPG Imperial Barrel Competition.

Recipient: Tuttle Intermediate School (\$3,300)

Grant used to fund the purchase at Ward's Science a multitude of items directly related to Earth Science experiments and learning opportunities. The items selected will assist in teaching weather, wave, minerals, rocks, contour mapping and microscopic studies.

The Shirley A. Davis Program for Earth Science Education: (\$1,375)

Recipient: Lakeview Elementary School (\$550), Yukon

Grant used to fund the purchase of 10 sets of rock sets for use with the "More! Rocks in Your Head" curriculum.

Recipient: Okarche Junior High (\$825)

Grant used to fund the purchase of 8 rock and mineral sets for students in the 7th and 8th grade.

The Oklahoma Geological Foundation Graduate Fellowship Award: (\$6,000)

Recipient: Lennon Infante-Paez, University of Oklahoma

Efficient Workflows in Seismic Chronostratigraphy to Unravel Geomorphology and Improve Reservoir Characterization

The Oklahoma Geological Foundation Non-Directed Funds: (\$5,000)

Recipient: OPUBCO Communications Group

Grant proceeds were used to generate and circulate teacher lesson plans that are intended to promote Earth Science education in the State of Oklahoma through participation in "Newspapers in Education", a program sponsored by OPUBCO Communications Group. The lesson plans cover various topics in Geology and other Earth Sciences and are generated and then distributed to teachers in Oklahoma. The publication of these lesson plans reaches more than 600 schools, 880 teachers and administrators and over 15,000 students in the State of Oklahoma. In 201, "Shake, Rattle, & Roll" was the topic covered by the lesson plans associated with the "Oklahoma Rocks" publication.

FELLOW LEVEL

\$250,000 OR GREATER

CHESAPEAKE OPERATING, INC.

ADVOCATE LEVEL

\$100,000 - \$249,999

BENEFACTOR LEVEL

\$50,000 - \$99,999

PARTNER LEVEL

\$10,000 - \$49,999

LANCE RUFFEL OIL & GAS CORPORATION
EQUITABLE ROYALTY CORPORATION
ANONYMOUS
OKLAHOMA CITY GEOLOGICAL SOCIETY
PHILLIP BOYLE FOUNDATION
BANCFIRST TRUST & INVESTMENT MANGEMENT
CHARTER OAK PRODUCTION CO., LLC

LOUIS M. FORD, LLC
THE RESERVE PETROLEUM COMPANY
JEROME WESTHEIMER FAMILY FOUNDATION INC
MID-CONTINENT SECTION OF AAPG
THE MAGNOLIA CHARITABLE FOUNDATION
FERRELL OIL CO.

CONTRIBUTOR LEVEL

\$5,000 - \$9,999

CARL E. GUNGOLL EXPLORATION LLC
YALE OIL ASSOCIATION, INC
WARREN & CHRISTIAN INC
GHK COMPANIES
WARD PETROLEUM COMPANY
CRAWLEY PETROLEUM CORPORATION
ANCOVA ENERGY LLC
RED MOUNTAIN ENERGY LLC

AMERICAN ENERGY PARTNERS
H. HUFFMAN & CO.
DUNCAN OIL PROPERTIES, INC
SPARTAN RESOURCES, LLC
PSEC, INC
SAM VIERSEN FAMILY FOUNDATION
ALLIED WIRELINE SERVICES, LLC

SUPPORTER LEVEL

\$2,500 - \$4,999

B & W EXPLORATION
BUTTRAM ENERGY, INC
BLACK FAMILY LLC
SLAWSON EXPLORATION COMPANY INC
CONTINENTAL RESOURCES
ASCENT RESOURCES

ANCHORAGE RESOURCES LLC
CHAMPLIN EXPLORATION
KERR-MCGEE CORPORATION
BAKER HUGHES
MURFIN DRILLING CO.

FRIEND LEVEL

\$500 - \$2,499

ARVINE PIPE AND SUPPLY CO INC
CIRRUS PRODUCTION COMPANY
DEVON ENERGY CORPORATION
LOWRY LAND CO INC
TAPSTONE ENERGY
OAKSPRING ENERGY
PATTERSON UTI
WEATHERFORD WIRELINE
GE GLOBAL RESEARCH
TERRAQUEST CORPORATION
OSU BOONE PICKENS SCHOOL OF GEOLOGY
KEYDET OIL LLC
HORSE CREEK OIL COMPANY
INTERNATIONAL PIPE & SUPPLY COMPANY
MORAN-K OIL LLC
SANDRIDGE ENERGY
HALLIBURTON

ROLLING ROCK LLC
SABCO OPERATING COMPANY
TRIAD OPERATING COMPANY
DAWSON GEOPHYSICAL COMPANY
TALL OAK MIDSTREAM LLC
GREENBRIAR RESOURCES CORPORATION
EXXONMOBIL FOUNDATION
MOBIL FOUNDATION INC
SCHONWALD LAND INC
DOMINION FOUNDATION
BRACKEN ENERGY CO
BRACKEN OPERATING LLC
ORBIT ENERGY INC
EDRIO OIL COMPANY
DRILLINGINFO
TGS

ASSOCIATE LEVEL

UP TO \$500

WOODSFIELD EXPLORATION INC
CIMARRON PRODUCTION CO INC
ANONYMOUS
OKLAHOMA CHAPTER OF SIPES
CUMMINGS OIL COMPANY
ASSOCIATION OF DESK & DERRICK
WIRT FRANKLIN PETROLEUM LLC
MUSTANG FUEL CORPORATION
WJF
NATIONAL BANK COMMERCE

CHELSEA ENERGY INC
GREENSTAR ENERGY PRODUCTION
STEVENS PRODUCTION COMPANY
FRANKLIN ENERGY & INVESTMENT
BEACH OPERATING COMPANY
CLEMENTS EXPLORATION
EN ECHELON LLC
PETROLEUM RELFECTIONS, INC

FELLOW LEVEL

\$250,000 OR GREATER

ADVOCATE LEVEL

\$100,000 - \$249,999

LANCE RUFFEL
HERBERT G. & SHIRLEY A. DAVIS
THOMAS C. CRONIN
MARILYN S. CLEMENT

BENEFACTOR LEVEL

\$50,000 - \$99,999

FREDERICK H. & LOIS M. KATE

PARTNER LEVEL

\$10,000 - \$49,999

SUZANNE TAKKEN
DENNIS F. & BONNIE E. SMITH
J. MARK & CAROL LESTER
MARK S. SVOBODA
PETER J. MASSION
LAWRENCE H. & RONNA C. DAVIS
JASON F. & JULIE D. HAMILTON
ROBERT L. & JAYNE A. GILSON
JOSEPH C. STRUCKEL
WILLIAM M. SMITH
HAROLD J. KLEEN

JOEL A. & SUSAN P. ALBERTS
ANONYMOUS
DAVID M. PULLING
FRANK W. & CINDY N. GAGLIARDI
FREDERICK M. BLACK
DALE SHIPLEY
ROBERT W. WARING
JANICE E. WARING & MICHAEL MAHONEY
JOHN A. BRETT III
CHARLES A. FERRELL
ROBERT R. & RUTH KLABZUBA

CONTRIBUTOR LEVEL

\$5,000 - \$9,999

RAY H. POTTS
WILBUR E. MCMURTRY
LANDON W. & KATHY HOLMAN II
ANONYMOUS
MICHAEL R. & ELAINE D. ROOT
SHARLENE S. BRANHAM
JERE W. MCKENNY
MARK D. & KIM FALK

DAVID S. FLEISCHAKER
LEW & MYRA WARD
J. PHILIP BOYLE
GARY MCDANIEL
ROBERT BRYAN WALLER
DUKE R. LIGON
GREG & MELINDA FLOURNOY
ANONYMOUS

Individual Contributions Thru 12/31/2017 (Cont.)

SUPPORTER LEVEL

\$2,500 - \$4,999

ANONYMOUS
KIRK KOLAR
LES J. BROKER
JAMES P. WALKER
LARRY G. & LEELLEN AKERS
ROBERT W. ALLEN
RICHARD & DEBE HAUSCHILD
ARTHUR L. PAQUETT
DURWOOD J. PATE
JORDAN C. BRAUN

TERRY L. & ELIZABETH I. HOLLRAH
STEVEN J. BOONE
ROBERT L. SCOTT
EKS WYE POLLOCK III
CARL G. HALE
KIRK R. WHITMAN
RALPH ESPACH
BILL B. HARRIS
ROGER D. WILKINSON
GLENN & DEBRA BLUMSTEIN

DAVID G. CAMPBELL
SAM & JENNIFER ROARK
JAMES W. CAYLOR
VICTOR J. VERODA
DAVID LE NORMAN
JOHN KAPCHINSKE
MARK V. & CHRISTY A. MAZZA
WALTER J. HENDRICKSON

FRIEND LEVEL

\$500 - \$2,499

THOMAS E. DAVIS
CAMERON MCLAIN
SHELLY LASSITER
DAVID G. BRYANT
PETER D. GILL
GREG FRANKLIN
O.N. GOODE JR.
LEE R. RILEY
STEVEN W. KAGE
BRIAN BAYLISS
JEFF BALDWIN
MARK A. & KAREN POWERS
BARTH W. BRACKEN
RONALD G. MERCER
GARY W. HART
KENNETH S. JOHNSON
LEONARD C. & TERYLE A. DIONISIO
GREGORY A. & DEBRA A. WILSON
LESLEY EVANS
DICK S. HORTON
MICHAEL W. SMITH
BILL D. BROUGHTON
JOHN H. GATCHELL
ROBERT A. NORTHCUTT
JAMES S. MCGHAY
PATRICK M. TOLSON
J. PATRICK ROLLA
PETER S. NORTON
JOHN C. ROBERTS
STEVEN R. RUSSELL
THOMAS W. OLSEN

WILLIAM CORY BECK
JOSEPH J. & JOAN M. BRUNS
H.W. & NORMA J. PEACE
MICHAEL R. MCFEELY
DANIEL K. & SUSIE WARING
STEVE LADNER
SCOTT D. SACHS
TODD STEPHENSON
TERRY N. MARPLE
MICHAEL A. POLLOK
MIKE & KAREN KUYKENDALL
MIKE MURPHY
ART L. SWANSON
ROBERT P. FLACK
H.P. TRIVEDI
CLYDE BECKER
HAROLD W. HANKE
DON HENDRIE
W.P. BUCKTHAL
STUART MAIER
ANONYMOUS
LARRY ALBERT
DEWEY BARTLETT JR.
BILL JEZEK
JO ANN WARING
RICHARD & JACKIE SNYDER
JON E. & ANNA B. RISEDEN
LOUIS R. WILSON
JACK P.F. BOWLES
DON YAW
JERRY GLEN MCCASKILL

GERALD D. NEFF
STEVEN KNOWLES
PAUL CLEMENTS
WILLIAM B. CLEARY
DOUGLAS R. CUMMINGS
M.L. VANCE
WILLIAM F. RIPLEY
DEVIN P. & ELIZABETH K. DENNIE
RICK & MARY FRITZ
NICHOLAS TERECH
GREG MCDONALD
STEVE CHIPERA
JASON KNEEDY
ZANE FLEMING
DAVID CLUPPER
JAMES MICHAEL JONES
LARRY FENITY
JOHN D. JONES
BRUCE M. BELL
WALT DUNCAN
ELIZABETH BRANHAM
TERI BIRDSALL
DREW RITGER
DAVID S. MARTINO
RANDALL KING MOORE
KEITH SACKETT
RANDY VON NETZER
PETE LEHLE
CHRIS GORDON

ASSOCIATE LEVEL

UP TO \$500

JAMES R. HOWELL
WILLIAM V. YORK
MICHAEL POWELL
MARK C. POTTS
JOSEPH H. AMBRISTER
MICHAEL G. COOK
RALPH L. EDWARDS
W.F. HERMEN
BILL H. REED
WILLIAM M. MAJORS III
SHERRILL D. HOWERY
FRANK THOMPSON
ANONYMOUS
TRAVIS WILSON
ANONYMOUS
JIM MCKENNY
CRAIG ELDER
ROBERTO & MARCIE FEIGE
THOMAS L. MYERS
MARK D. & APRIL H. ORGREN
SUZANNE M. ROGERS
JIM ROWE
LENNY & JUNIA FERNANDO
WILLIAM JACKSON
ANONYMOUS
JOHN W. SHELTON
MARVIN ABBOTT
GERALD R. & CINDY E. ALLEN
LARRY D. SMITH
JOHN T. & DENA JO PERKINS
ROBERT J. SPRINGMAN
TRAVIS GLAUSER
DARYL WILLIAMS
ANONYMOUS
GREGORY B. ANDERSON
ROBERT W. SANDRIDGE
RICK & COLLEEN JOHNSON
SHIRLEY L. GATCHELL
BEN R. MAN
RONALD J. KRAKOWSKI
RANDAL D. HALEY

C. DOUGLAS LEMASTER
GERRY CRAIN
JACK K. RICHARDSON
D.C. WRIGHT
GREG ISEMAN
MR. & MRS. JAMES K. FORD JR.
THOMAS R. CONROY
STEVEN G. JONES
TRUMAN F. LOGSDON
JERRY LEE
ANONYMOUS
BRIAN J. & LESLEY C. SMITH
KATHY LIPPERT
JAMIE POOR
JAMES D. PATE JR
MICHAEL P. CROSS
W.A. BILL GLASS
JOSEPH GILLILAND
DONALD BLOUSTINE
H.J. BREWER
JOHN W. & PATSY F. EADS
F.M. BUXTON
DENNIS C. BROWN
ROBERT & HELENA DAVIS
GARY E. & SUSAN A. AMES
JAMES FOWLER
CHARLES M. GILBERT
JAMES R. HAZELWOOD JR.
HUSTON HUFFMAN
RUTH ADAMS
CLAUDIA J. LANDRUM
MASON MCLAIN
JOSEPH F. MUELLER
CHARLES N. NOBLES
ROBERT L. STEVENS
DAVID M. THOMAS III
THOMAS E. WITTY
HAL BROWN
THOMAS G. WYGANT
SCOTT TAYLOR
ROBERT W. & MARGARET A. JENSEN

GEORGIA MONTGOMERY
JAY A. THOMAS
BLAKE C. ARNOLD
JIM NEWKUMET
STEVE W. & PATRICIA I. WALLIS
HARRY W. TODD
FRANCIS W. KING
SOM SENGUPTA
RICHARD OBEE
BILL BARBEE
CARROLL L. BREWER
ANONYMOUS
GREG COX
KEITH DOWNING
DAVID FRUIT
GUY B. KIKER
JAMES H. LIDDELL
CLAY MOORE
EDWARD P. O'BRIEN
JOE E. SEARS
JOHN D. VITEK
H.L. WILSON
JOHN ABNEY
BILLYE PETERSON
R. GARVIN BERRY JR.
C.W. BOLIN
N.B. DEGRAFFENREID
JOHN W. ERICKSON
THOMAS G. FERRELL
W.J. FORD
JOE H. FOSTER
HARRY G. HADLER
ROY E. MATTHEWS
JOE H. PLATTE
L. SPINNER PLATT
RICHARD E. SCHNEIDER
BILLY JOE SPURLOCK
M.L. HAM
W. JOHN ROBINSON
TERRY R. & MAX ANNA HANNA



DIRECTORS



Left to Right: J. Mark Lester, Michael J. Bone, Larry Lunardi, Lanny Holman, Thomas C. Cronin, Lawrence H. Davis, Terry L. Hollrah, Jason F. Hamilton, Lance Ruffel, Joel A. Alberts, Frank Gagliardi. Not Pictured: Devin Dennie.

JOEL A. ALBERTS (2009)

GOVERNANCE COMMITTEE

H. Huffman & Co.
301 NW 63rd Street, Suite 510
Oklahoma City, OK 73116
405-642-6900 (m) | 405-848-388 (o)
jalberts@hhuffmanco.com

LAWRENCE H. DAVIS (2009)

FOUNDATION DEVELOPMENT

MAP Royalty
101 N. Robinson, Suite 1000
Oklahoma City, OK 73102
405-590-8471 (m) | 405-536-2615 (o)
ldavis@maproyalty.com

JASON F. HAMILTON (2007)

GRANTS/PROGRAMS

Cornerstone Petroleum Corporation
6304 Redbud Ridge Road, Suite 200
Oklahoma City, OK 73162-3421
405-550-4491 (m)
jason@cornerstonepetro.com

J. MARK LESTER (2009)

LEGENDS COMMITTEE

Geoscience Consultant
13201 High Sierra Blvd.
Edmond, OK 73013-8248
405-740-4090 (m) | 405-478-0021 (o)
mark.lester3@aol.com

MICHAEL J. BONE (2015)

COMMUNICATIONS & TECHNOLOGY

B1 Exploration, LLC
7923 Highland Blvd.
Oklahoma City, OK 73025
405-305-7463 (m) | 405-286-5640 (o)
michaeljbone@gmail.com

DEVIN DENNIE (2015)

STEM OUTREACH

Devon Energy Corp.
333 W. Sheridan Ave.
Oklahoma City, OK 73012
405-213-5647 (m) | 405-228-7720 (o)
devin.dennie@dvn.com

TERRY L. HOLLRAH (2013)

PUBLICATIONS & MARKETING

Hollrah Exploration Co.
P.O. Box 721174
Oklahoma City, OK 73172-1174
405-761-2430 (m) | 405-773-5440 (o)
hollexco@sbcglobal.net

LARRY LUNARDI (2017)

SCHOOL SERVICES

11300 Blue Sage Road
Oklahoma City, OK 73120
405-641-9115 (m)
llunardi@gmail.com

THOMAS C. CRONIN (2003)

CHAIRMAN

K. Stewart Exploration Group, LLC
3317 E. Memorial Road, Suite 200
Edmond, OK 73013
405-641-5833 (m) | 405-475-9010 (o)
tcronin@coxinet.net

FRANK W. GAGLIARDI (2013)

SPONSORSHIP COMMITTEE

Chesapeake Energy
6100 N. Western Ave.
Oklahoma City, OK 73118
405-397-2694 (m) | 405-935-1437 (o)
frank.gagliardi@chk.com

LANNY HOLMAN (2015)

DONOR DEVELOPMENT & PLANNED GIVING

Red Mountain Energy
6832 N. Robinson
Oklahoma City, OK 73118-4032
405-808-0128 (m) | 405-842-4500 (o)
lholman@redmountainenergy.net

LANCE RUFFEL (2005)

FINANCE COMMITTEE

Lance Ruffel Oil & Gas Corporation
210 Park Ave., Suite 2150
Oklahoma City, OK 73102
405-203-1262 (m) | 405-239-7036 (o)
lanceruffel@hotmail.com

PROMOTING EXCELLENCE IN EARTH SCIENCE EDUCATION

OKLAHOMA GEOLOGICAL FOUNDATION

www.oklahomageologicalfoundation.org