

DR. GARY F. STEWART

LIVING LEGEND

DR. GARY F. STEWART is undoubtedly one of the most revered professors of geology at Oklahoma State University. After graduation from Weleetka High School in the early 1950's, Gary received his Bachelor of Science degree from OSU, his Master of Science degree from the University of Oklahoma, and a Doctor of Philosophy degree from the University of Kansas.

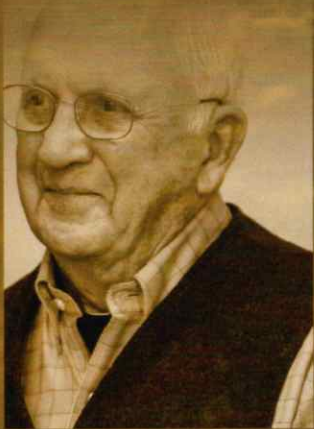
In 1956, while pursuing his education, Gary was a geological assistant for Phillips Petroleum in Corpus Christi, Texas. After receiving his bachelor's degree, he worked for Humble Oil & Refining Company in Midland. From 1962 to 1971, he was employed as a geologist for the Kansas Geological Survey doing research in subsurface stratigraphy, environmental geology, and geomorphology. Gary then became a consulting geologist and contractor at the Oak Ridge National Laboratory with his expertise in subsurface disposal of radioactive waste and probable effects of erosion in Central Kansas.

In the fall of 1971, Dr. Stewart joined Oklahoma State University as an Assistant Professor and became an Associate Professor in 1973. He received full Professorship in 1981 and now serves as Professor Emeritus at OSU. He continues to work with graduate students using his experiences in academia and industry to teach practical as well as theoretical approaches to the study of geology.



Gary has worked as a consulting geologist for several companies and has been involved in exploration of the Powder River Basin, examining the facies analysis of the North Sea region, the Mediterranean area, and structural geology of the Springer-Morrow rock sequence of the Anadarko Basin. Gary has extensive experience as a consulting geologist for environmental assessment reports for the Grand River Dam Authority Generation Station in Mayes County, Oklahoma and the Sooner Generating Station in Noble County.

He continues to consult for various small oil companies including well-site geology in north-central Oklahoma. For many years, he consulted for the American Association of Petroleum Geologists and for the Society of Exploration Geophysicists as a geological copy editor.



Dr. Gary Stewart has been an instructor at the Boone Pickens School of Geology in numerous fields of geology such as petroleum, environmental, physical, stratigraphy, well log analysis, and geomorphology. Most importantly, he has served as an Advisor of Record for Graduate Degrees for more than forty students during his tenure at OSU.



As a result of his sincere and dedicated service to OSU and the Department of Geology in particular, Gary was forever immortalized and honored by having the Gary F. Stewart Core Research Facility dedicated on his behalf on the campus of Oklahoma State University in 2019. The Oklahoma Geological Foundation is proud to honor Dr. Gary F. Stewart as a Living Legend.



"GARY HAS WORKED AS A CONSULTING GEOLOGIST FOR SEVERAL COMPANIES AND HAS BEEN INVOLVED IN EXPLORATION OF THE POWDER RIVER BASIN, EXAMINING THE FACIES ANALYSIS OF THE NORTH SEA REGION, THE MEDITERRANEAN AREA, AND STRUCTURAL GEOLOGY OF THE SPRINGER-MORROW ROCK SEQUENCE OF THE ANADARKO BASIN."